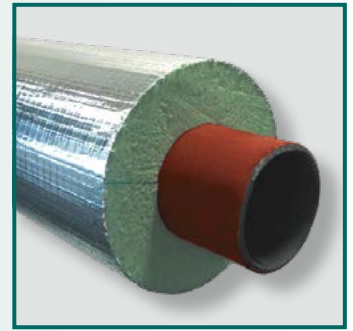


SUPAPHEN

Data Sheet



SUPAPHEN Phenolic Insulation

Supaphen is a high performance rigid phenolic thermal pipe insulation used primarily for the lagging of chilled, cold, hot and heating pipe work.

Supaphen complies with the requirements of product standard BS EN14314, thermal insulation products for building equipment and industrial installations – factory made phenolic foam (PF) products.

Supaphen is fire and smoke safe and has been tested at Warrington Fire in the UK as a pipe section to the required standard EN13501-1 achieving BL - s1, d0.

Supaphen is highly thermally efficient with a maximum aged K value (thermal conductivity) tested to European standard EN12667 of 0.025 W/m.k.

Supaphen is verified in accordance with the requirements of EN 15804:2012+A1:2013 - under the BRE Global Verified Environmental Product Declaration (EPD).

Supaphen is manufactured as a rigid block at a standard density of 40kg/m³. MW Insulation fabricate pipe section from block at a uniform thickness and to close tolerances ensuring a tight fit to the pipe.

Supaphen is impregnated with a passivating silicate solution at foam manufacturing stage and the inner bore of Supaphen pipe sections are treated with a factory applied dust suppressing passivating bore coating solution.

MW apply a fire rated aluminium foil vapour barrier to the Supaphen pipe sections as standard. Alternative factory applied facings are also available – Proclad 150 or Vapor Fas 62-05 in silver, embossed, black or white.

Supaphen is also available as a high density product for the manufacture of load bearing Pipe Supports.

Please contact Mike Whelan or Scott Milner on 0161 877 1608 for information and technical support.

KEY TECHNICAL FEATURES

EN 15804:2012+A1:2013
Environmental Product
Declaration (EPD) - BRE Global
Verified

BS EN14314 Phenolic foam
standard compliant

Fire and Smoke safe -
BL -s1, d0 tested to EN 13501-1

Thermally efficient - max aged
K value of 0.025 W/m.k tested to
EN12667

Environmentally safe - CFC &
HCFC free, GWP less than 5

Zero Ozone Depletion Potential

Bore coated in line with major
engineering specifications

PROPERTIES	STANDARD	UNITS	SUPAPHEN
Nominal Density		kg/m ³	40
Colour			GREEN
Thermal Conductivity	EN12667	W/m.K at 10°C	0.025 max
Temperature Range		Celsius	-50°C to +120°C
Compressive Strength	EN826	kPa	
- Parallel To Rise			min 120
Closed Cell Content	EN4590		≥ 90%
Dimensional stability	EN1604		≤ 1.5%
Water absorption	EN1609	kg/m ²	≤ 1.25%

Supaphen Approvals & Compliance



MW Insulation Ltd Approvals & Compliance



FIRE TEST CLASSIFICATION

European standard EN 13501-1

BL -s1, d0

Class 0 to UK building regulations BS476 parts 6 & 7 - Results comply with the requirements for a Class 0 surface spread of flame as defined in Approved Document B(2006) "fire safety" to UK Building Regulations.

Environmental Commitment – MW Insulation operate a zero waste to landfill policy with as much waste as possible being recycled and the remainder used as refuse derived fuel.